

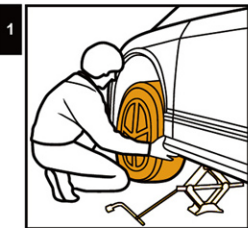


Installation Steps
安裝步驟 · 操作手冊



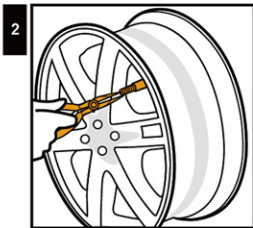
Orange Electronic Co., Ltd.
橙的電子股份有限公司
www.orange-electronic.com
service@orange-electronic.com
Made in Taiwan





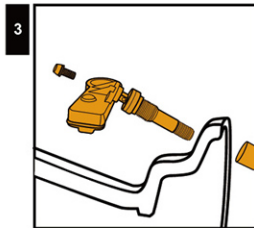
Jack up the car and dismount the tire.

使用千斤頂將車體提高。



Remove original valve.

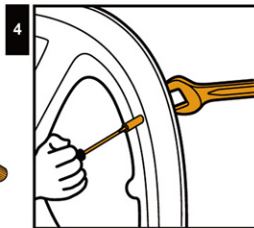
取出原氣嘴，小心清理殘留物。



Sensor Assemble

無線胎壓傳感器組裝。

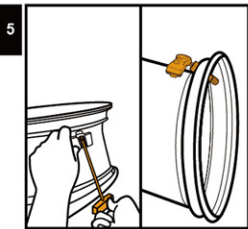
(※無線胎壓傳感器以下簡稱傳感器)



Use wrench to fix the valve, and then tighten the nut.

(Torque value must be $4\pm 0.5\text{Nm}$)

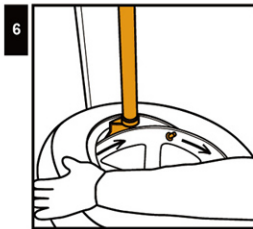
使用扳手固定氣嘴，再鎖緊螺帽
(鎖附扭力要 $4\pm 0.5\text{Nm}$)。



The screw has been locked by default. For the safety, please check again whether the sensor's screw is locked.

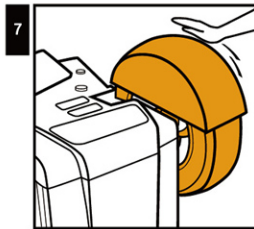
(Torque value must be $4\pm 0.5\text{Nm}$)

原廠出廠時此傳感器螺絲已鎖上，為保安全請再次確認是否鎖緊
(鎖附扭力要 $4\pm 0.5\text{Nm}$)。



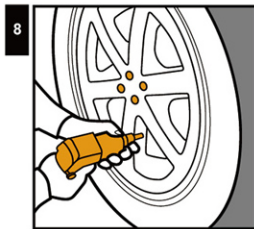
Install the tire from left side of the valve clockwise direction, avoid tire bead hits valve and sensor.

安裝輪胎，從氣嘴的左側為起始點，務必避開傳感器及氣嘴，以避免破壞傳感器。



Balance the tire.

輪胎平衡校正，可能需要加放鉛塊，直到輪胎平衡機顯示“平衡OK”。



Mount the tire to its position.

依照輪胎位置將已裝好傳感器之輪胎分別裝回原位。